

# Numerical Modeling of Coastal Wetlands

*Fieldwork for model calibration*

---

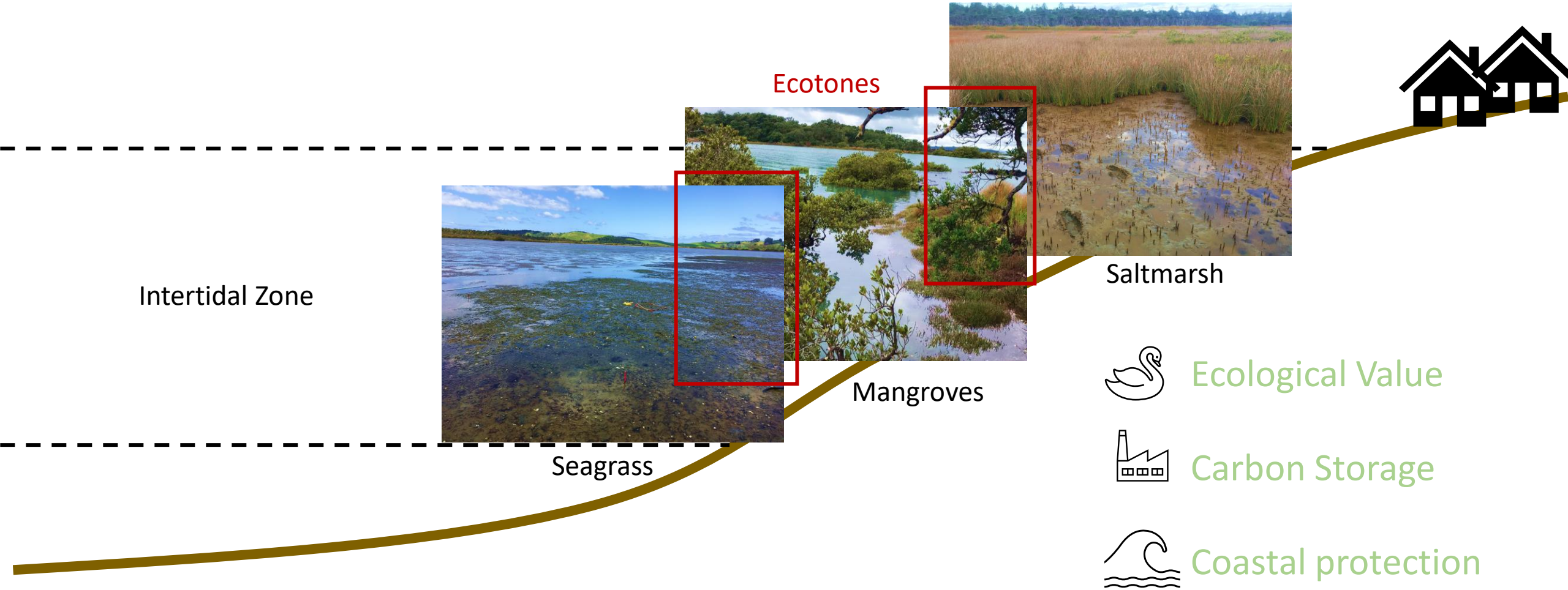
Sanne Vaassen

PhD candidate, University of Waikato

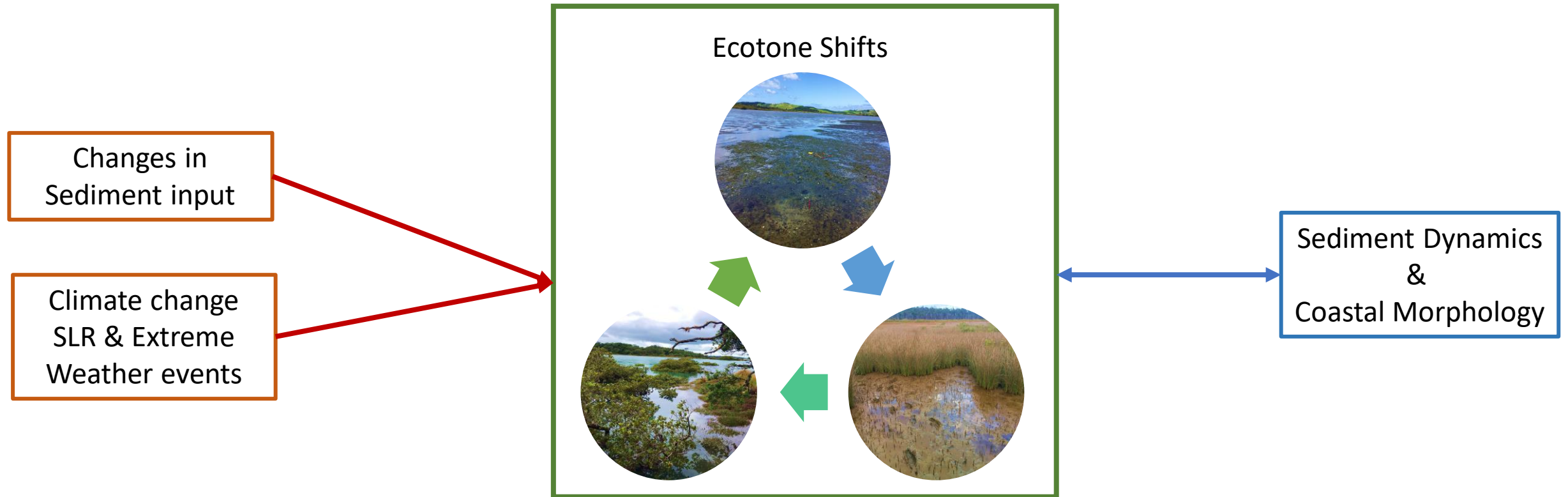
Karin Bryan, Andrew Swales & Joel Carr



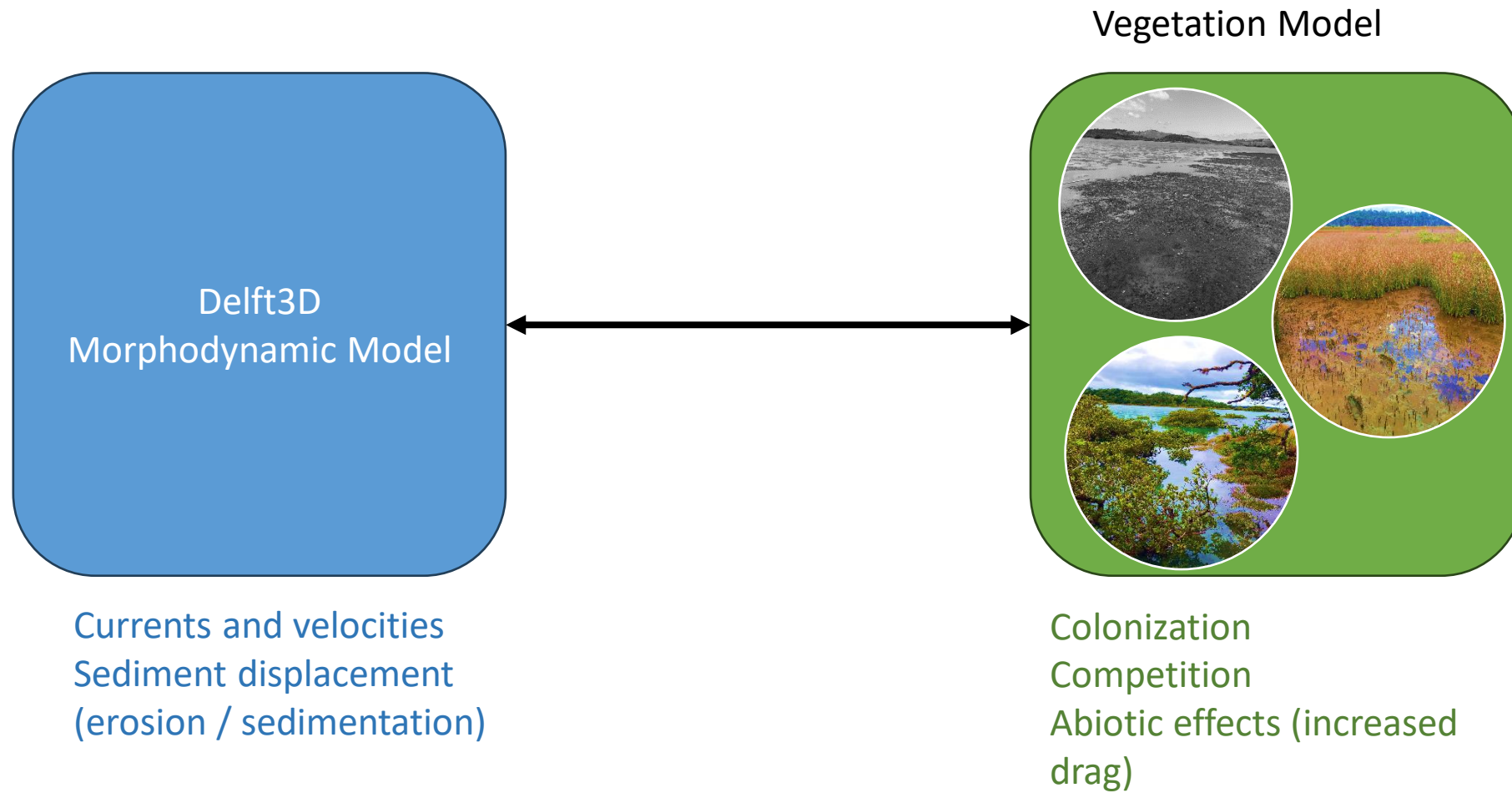
# 1. Coastal Wetlands



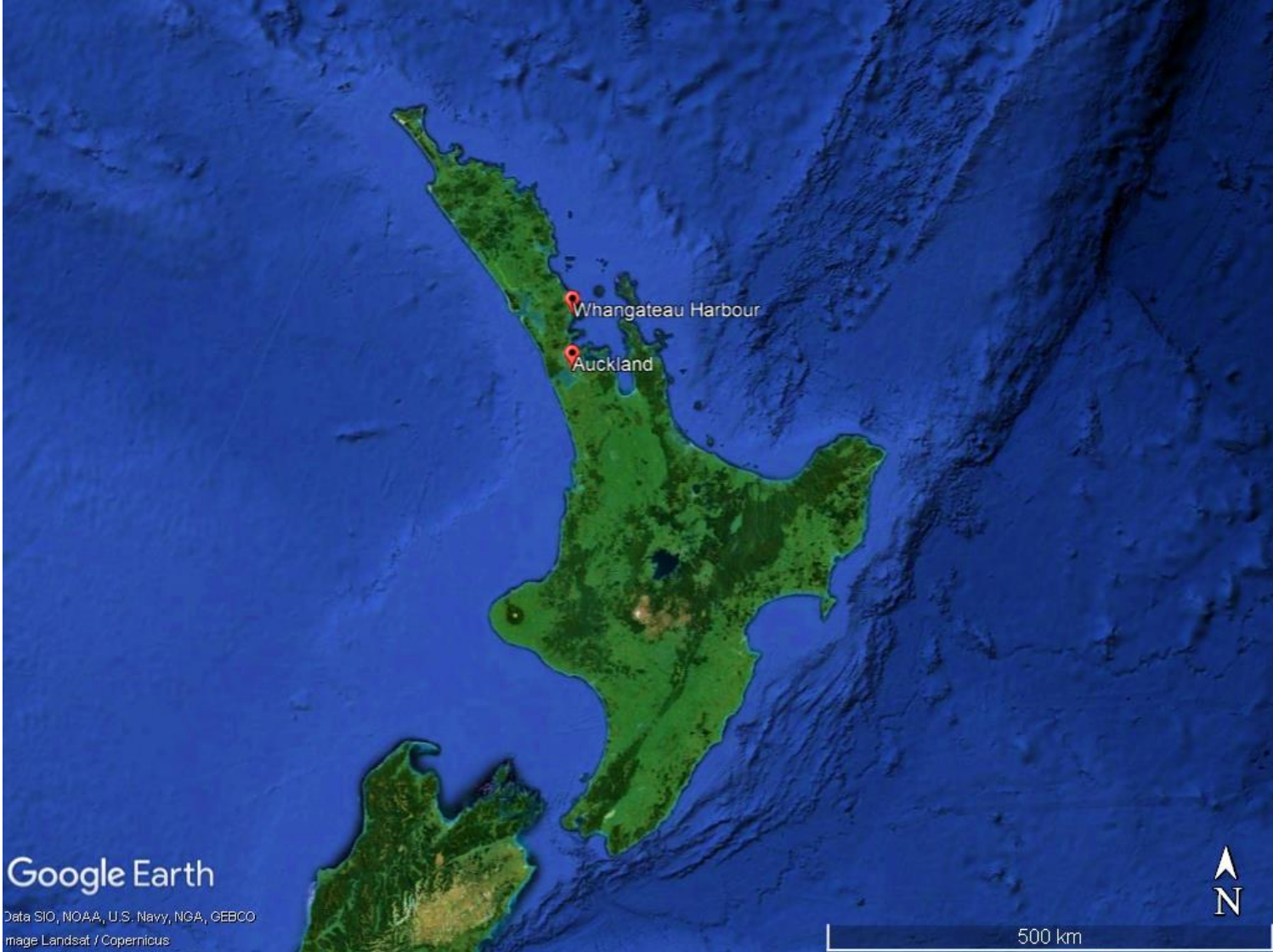
## 2. Research Goals



## 2 Research Goals numerical modeling



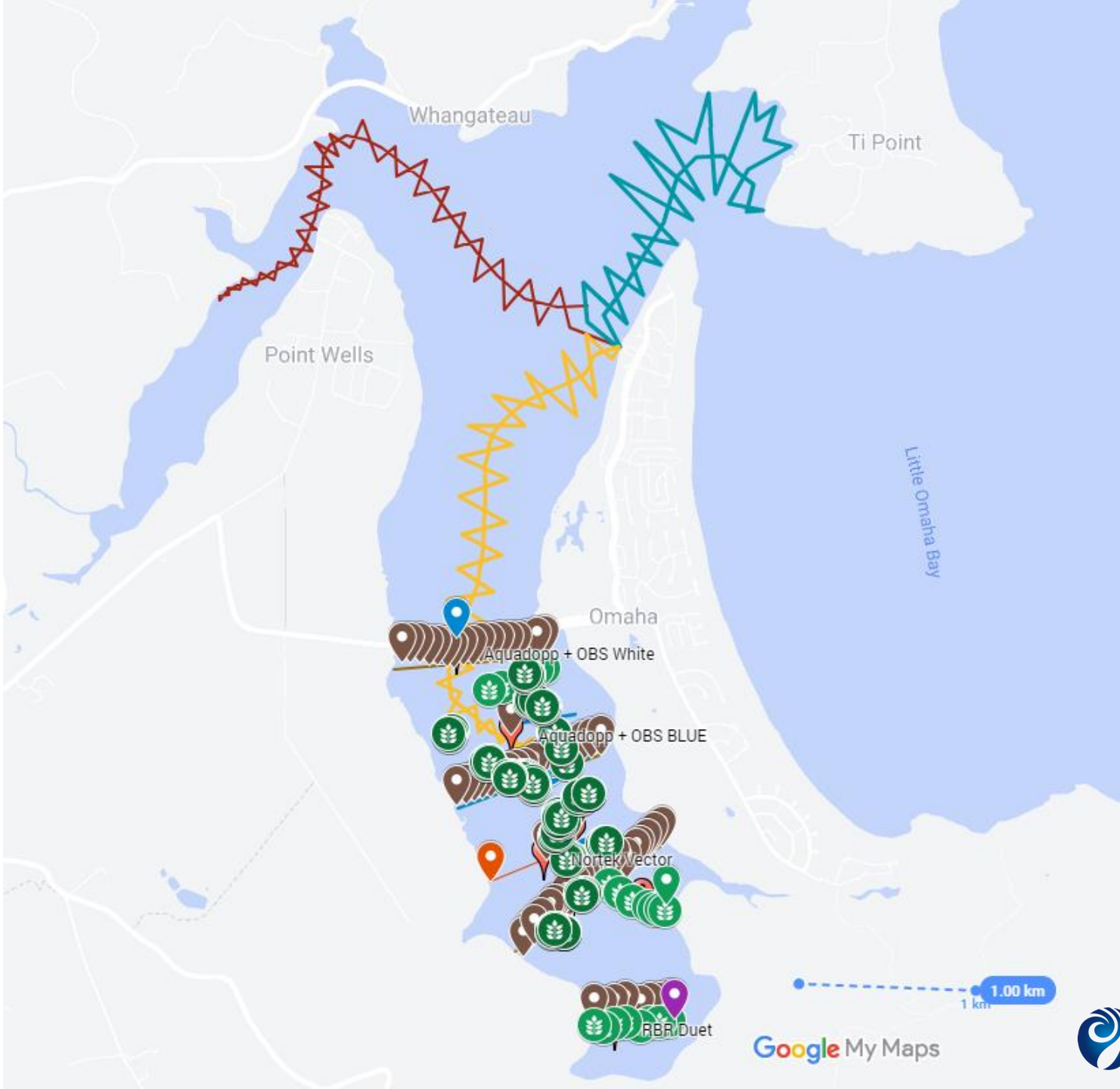
# 3. Study Site: Whangateau Harbour





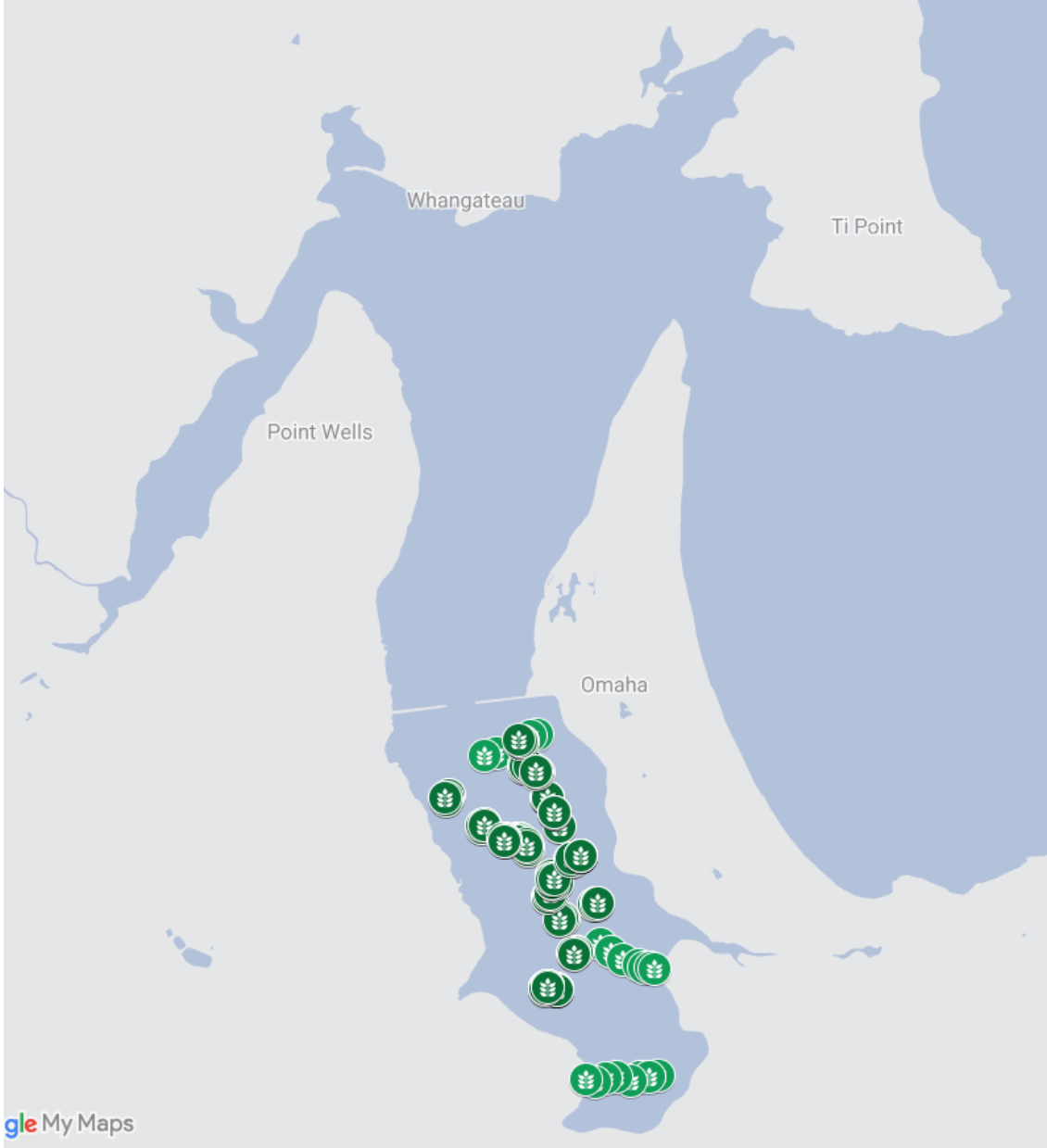
# 4. Fieldwork

12 Oct till 02 Nov 2023  
Spring/Neap tide



# 4 Fieldwork data collection

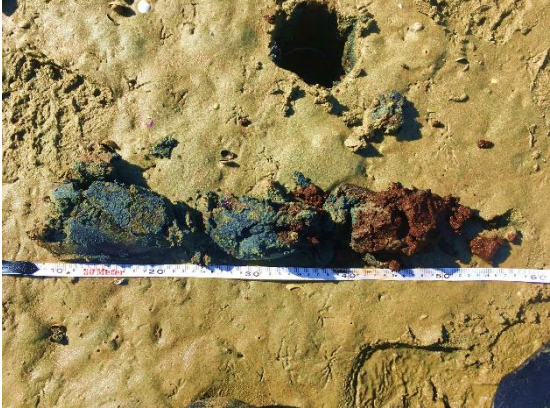
- Vegetation Surveys (seagrass, saltmarsh, mangroves, ecotones)



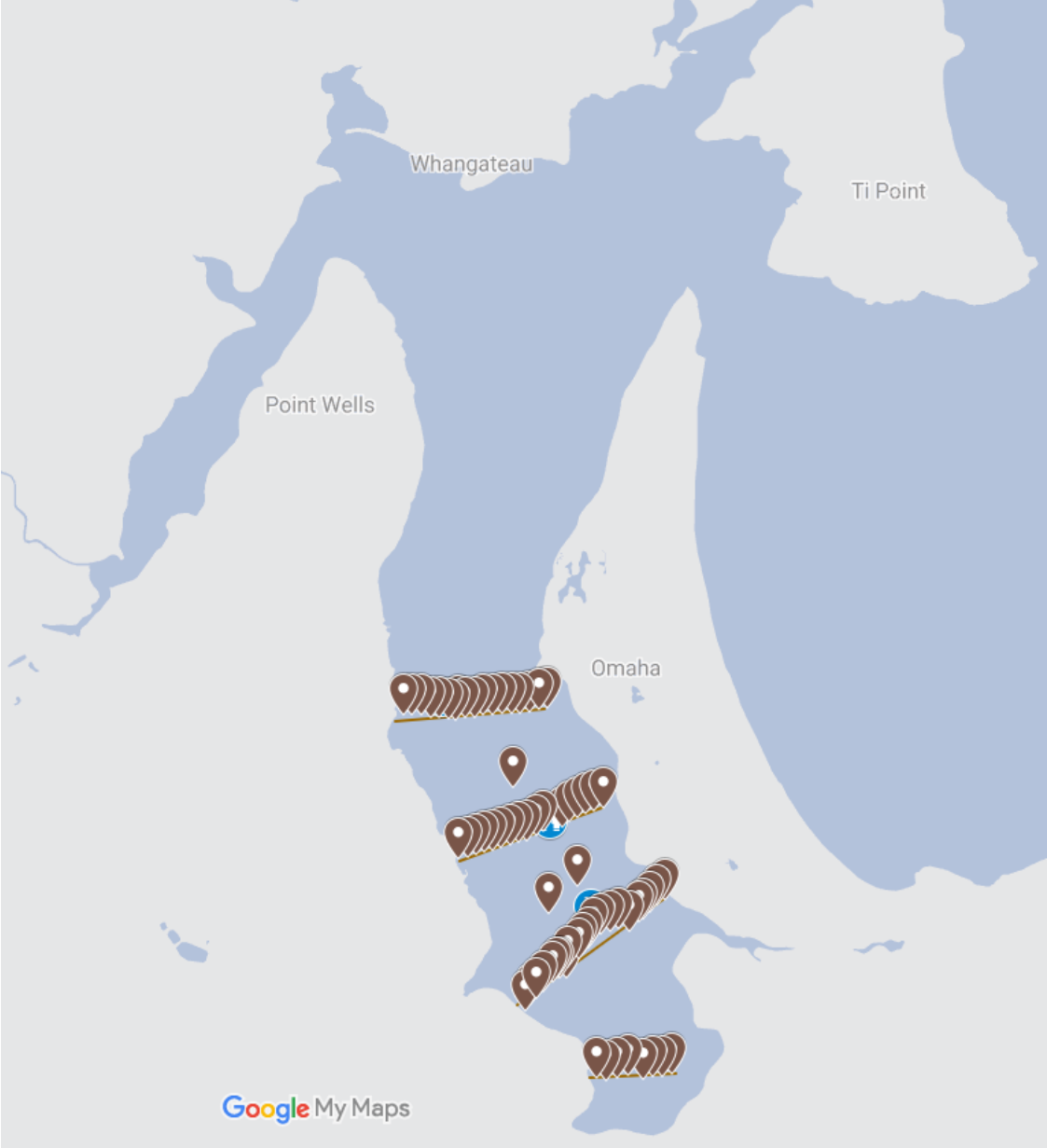
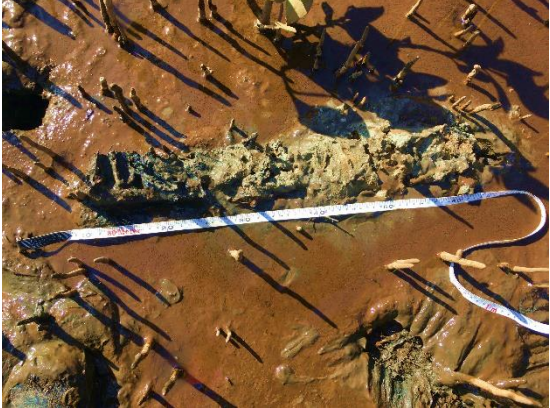
# 4 Fieldwork data collection

- Sediment Sampling

Sandflat



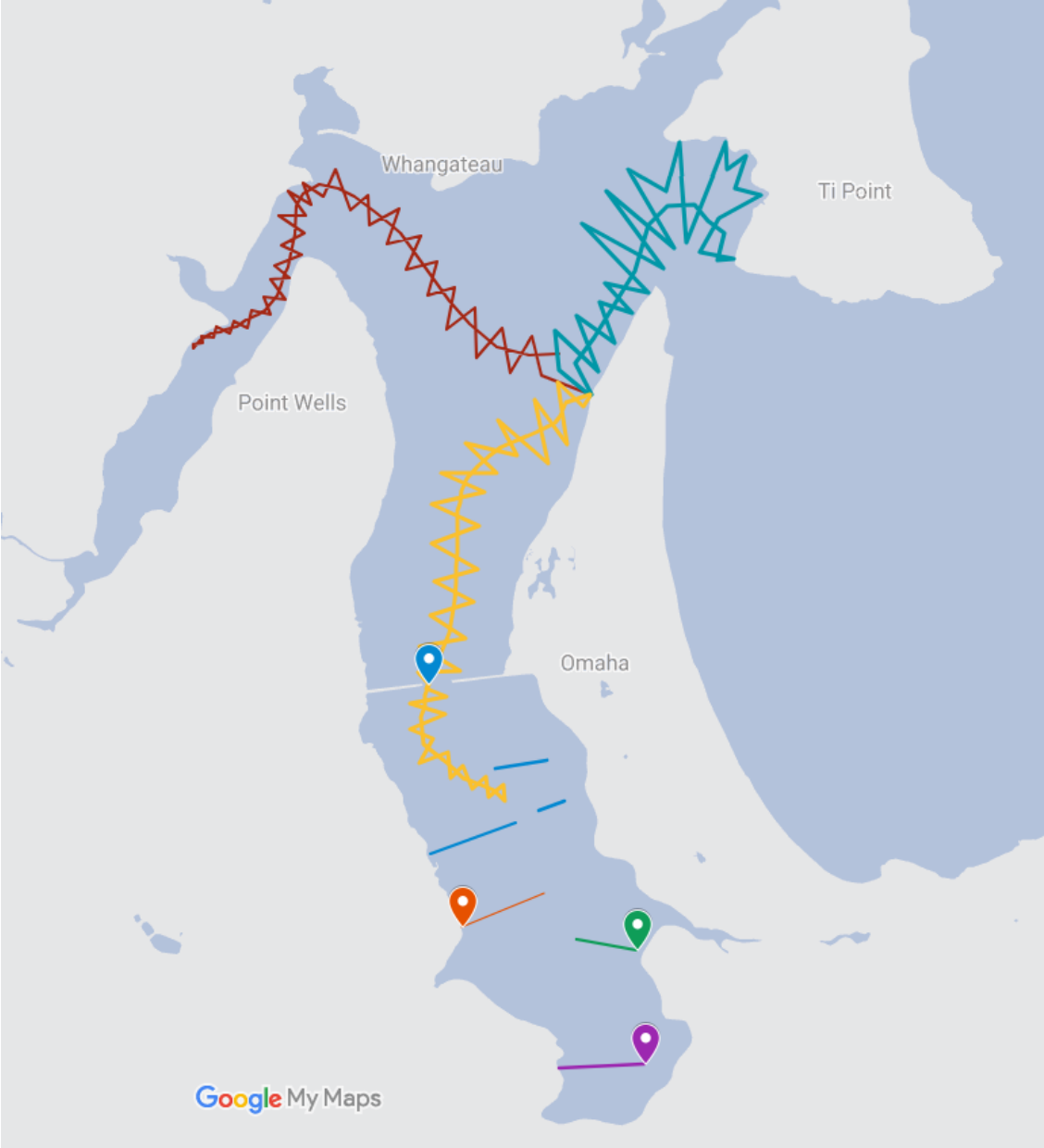
Mangrove





# 4 Fieldwork data collection

- Bathymetry Survey
  - Boat and Fishfinder
  - RTK





# 4 Fieldwork instruments

- Water level
- Flow velocity
- Flow Direction
- OBS [AQD] Sediment Concentration

Nortek Aquadopp



Nortek Vector

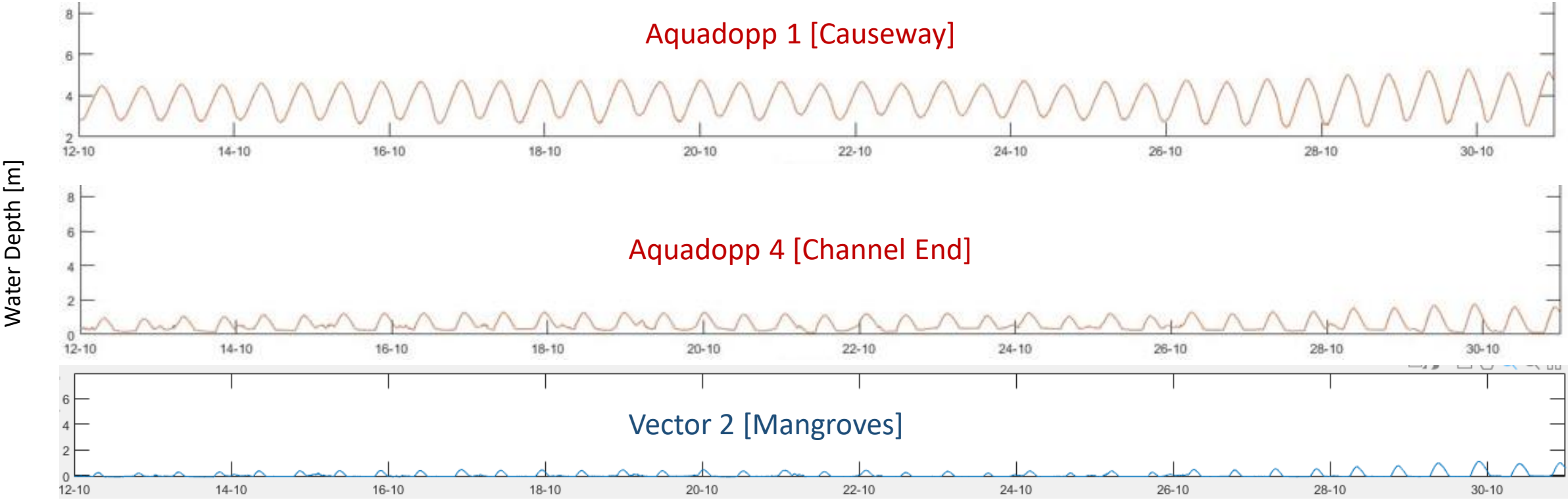


RBR Duet



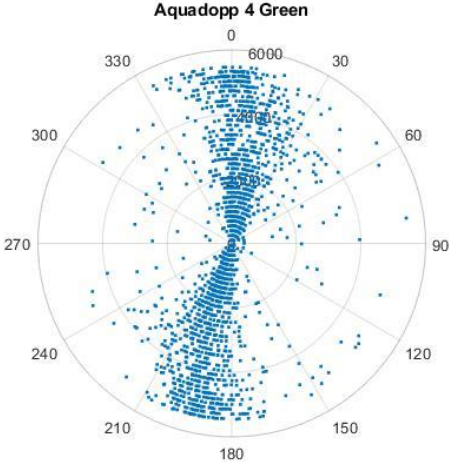
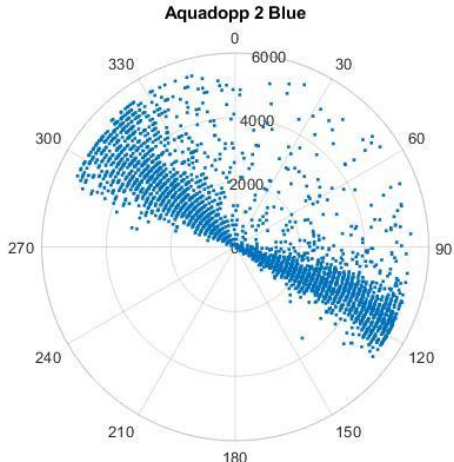
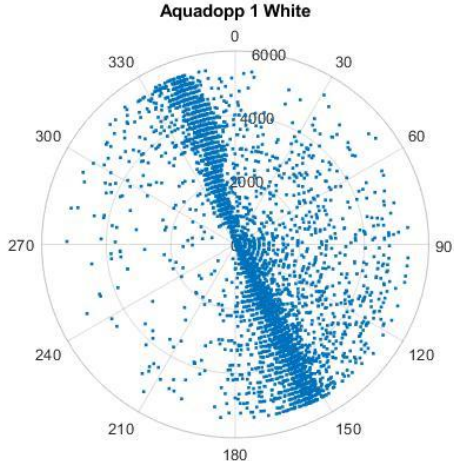


# 5. Instrument Output water levels



Date 2023

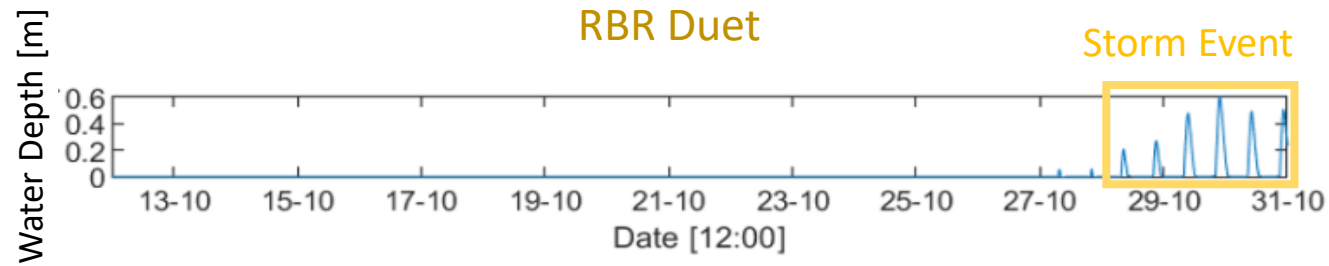
# 5. Instrument Output flow directions



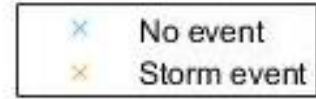


# 6. Storm Event

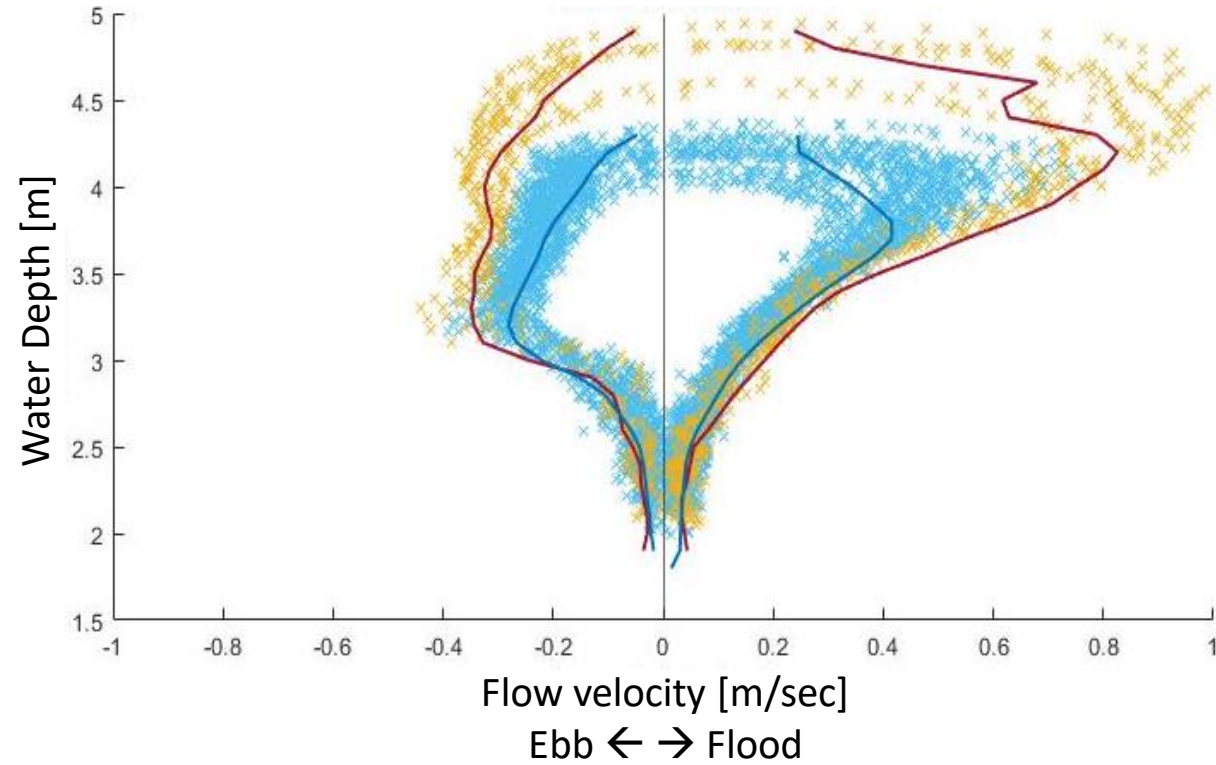
- Last 3 days of deployment
- Seedling dispersion → Ecotone shifts



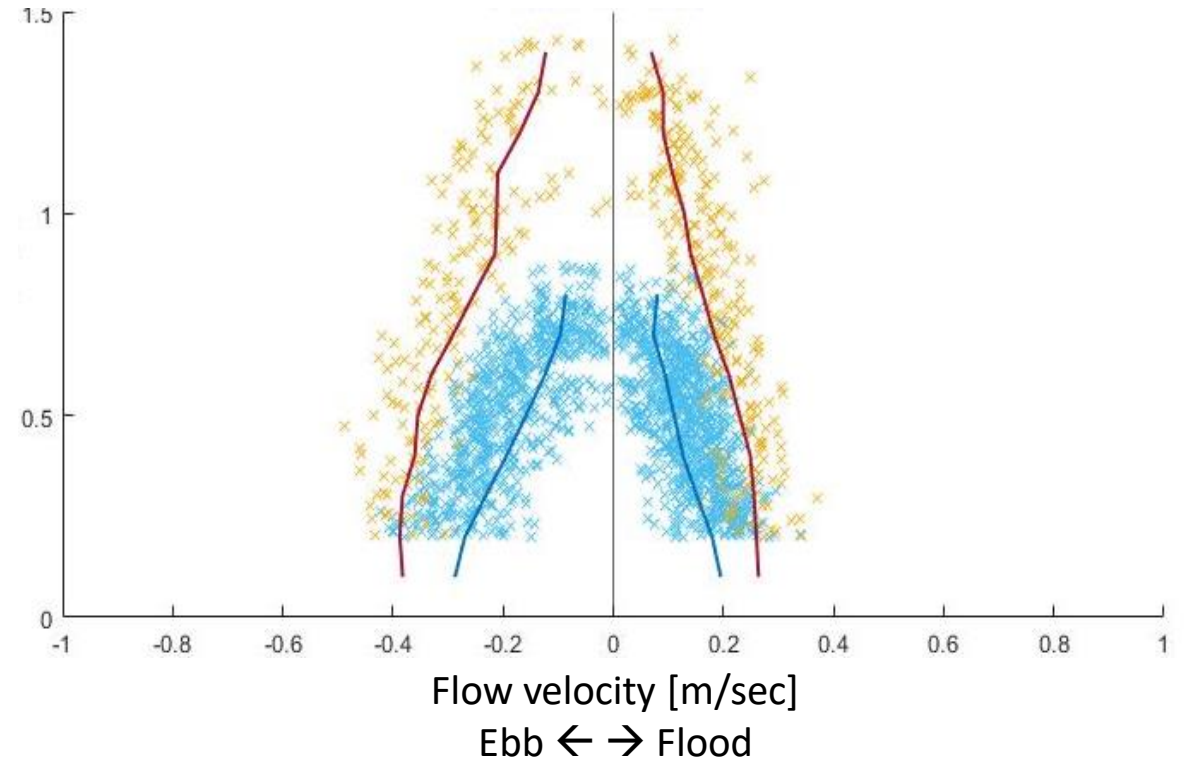
# 6. Storm Event



Aquadopp 1 [Entrance]



Aquadopp 4 [Channel End]





# Conclusions

- Data Collection
  - Expand understanding of processes in Whangateau Harbour
  - Valuable for model calibration and validation
- Learn about storm events



# Acknowledgements

- Future Coasts Aotearoa ~ Funding
- Ngāti Manuhiri ~ Access to fieldsite
- Auckland Regional Council ~ Data provision

