



Using Historic Satellite and 3D UAV Imagery to Map the Dynamics of the Coast at Sites with Anthropogenic Debris in Southland, New Zealand

Cassandra Newman

Masters Thesis



Table of Content

- Background
- Overview
- *Historic Shorelines*
- *Coastal Dynamics*
- *Predictions*
- Limitations and learnings
- Questions



The overall aim of this research was to investigate the ability of a generalised GIS methodology to quantify coastal dynamics at different locations with anthropogenic debris.

GIS = Geographical Information System



Monkey Island



Fortrose

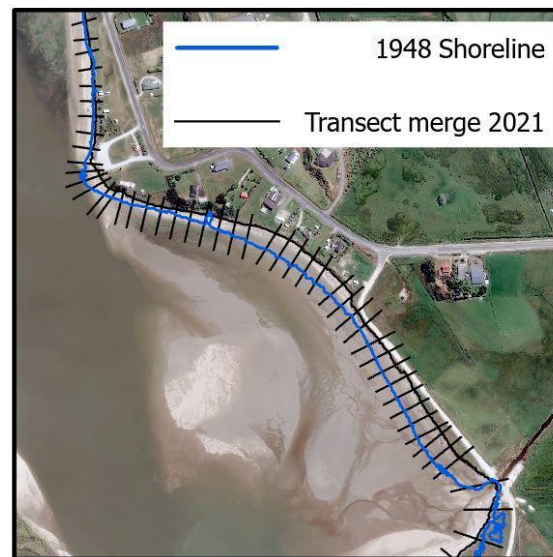
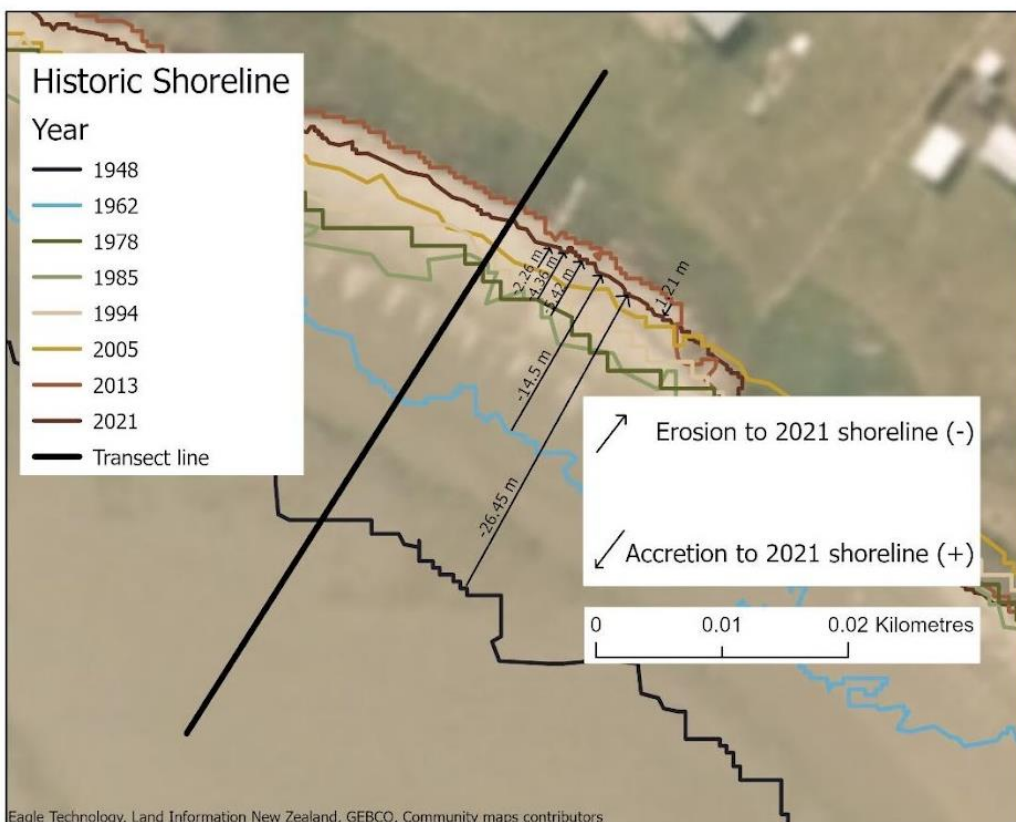
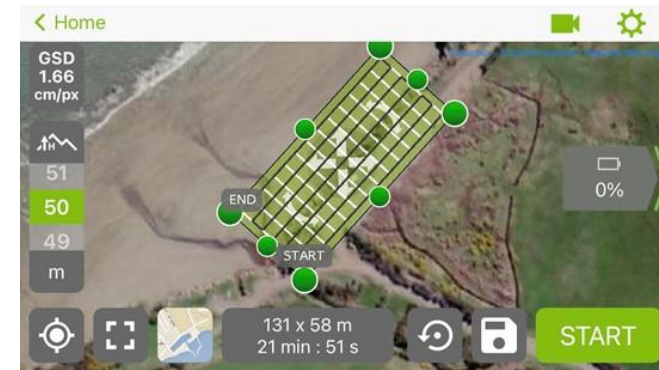


Colac Bay

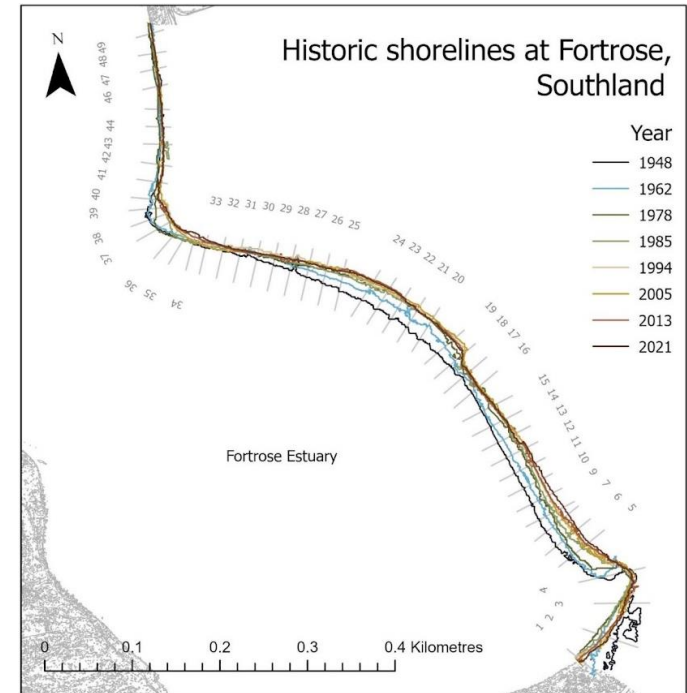
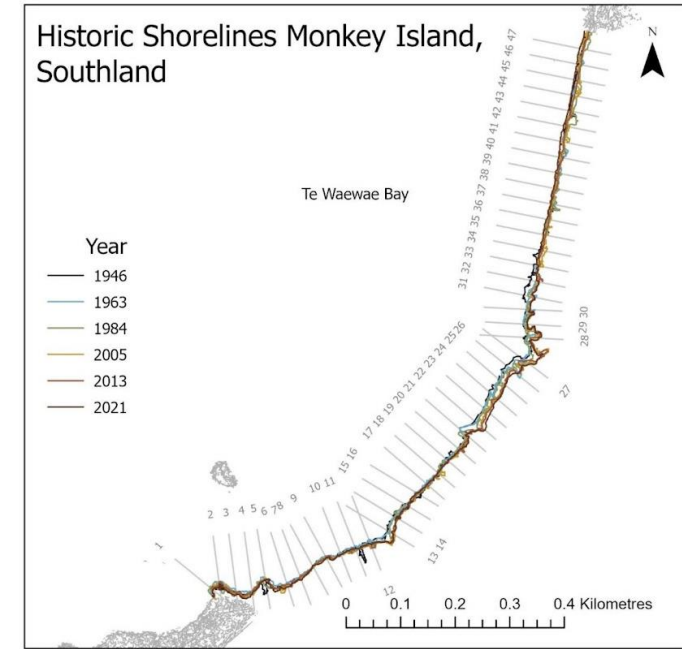
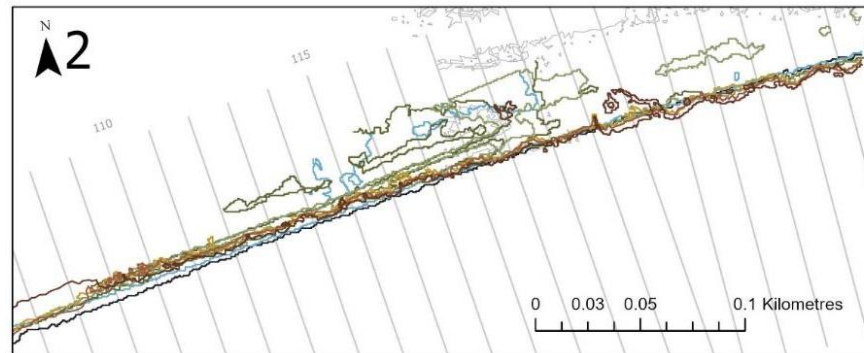
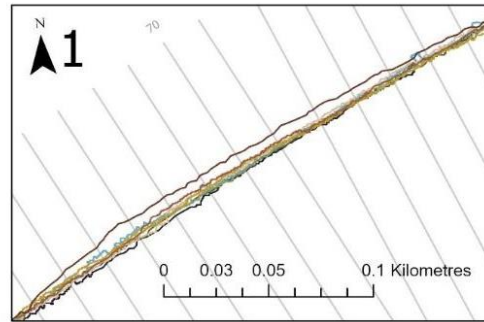
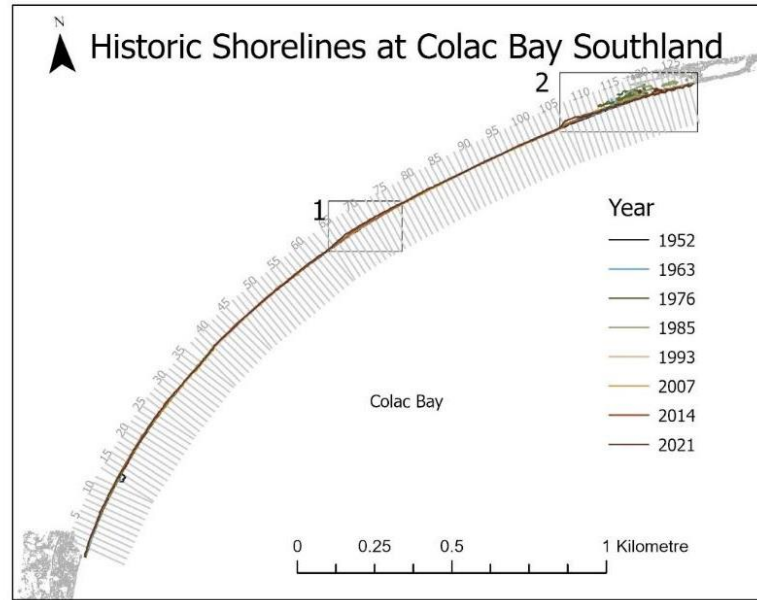
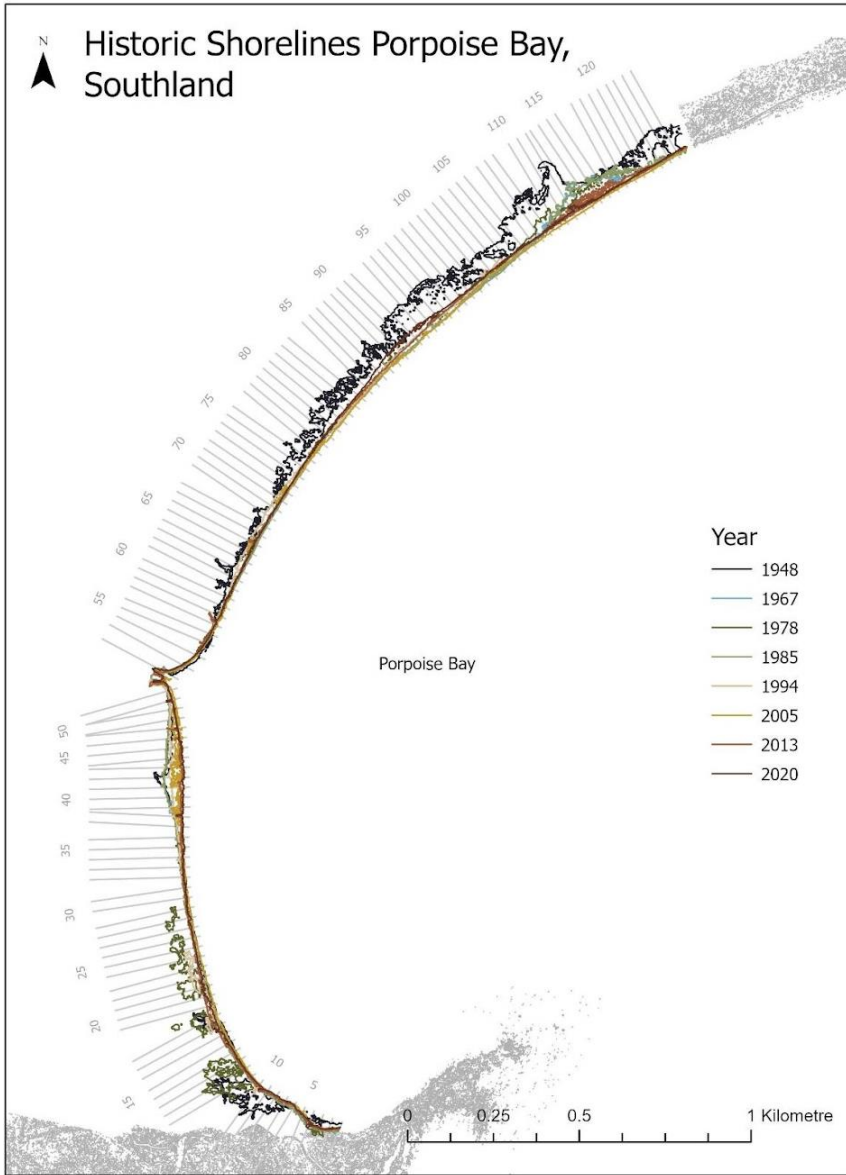


Porpoise Bay

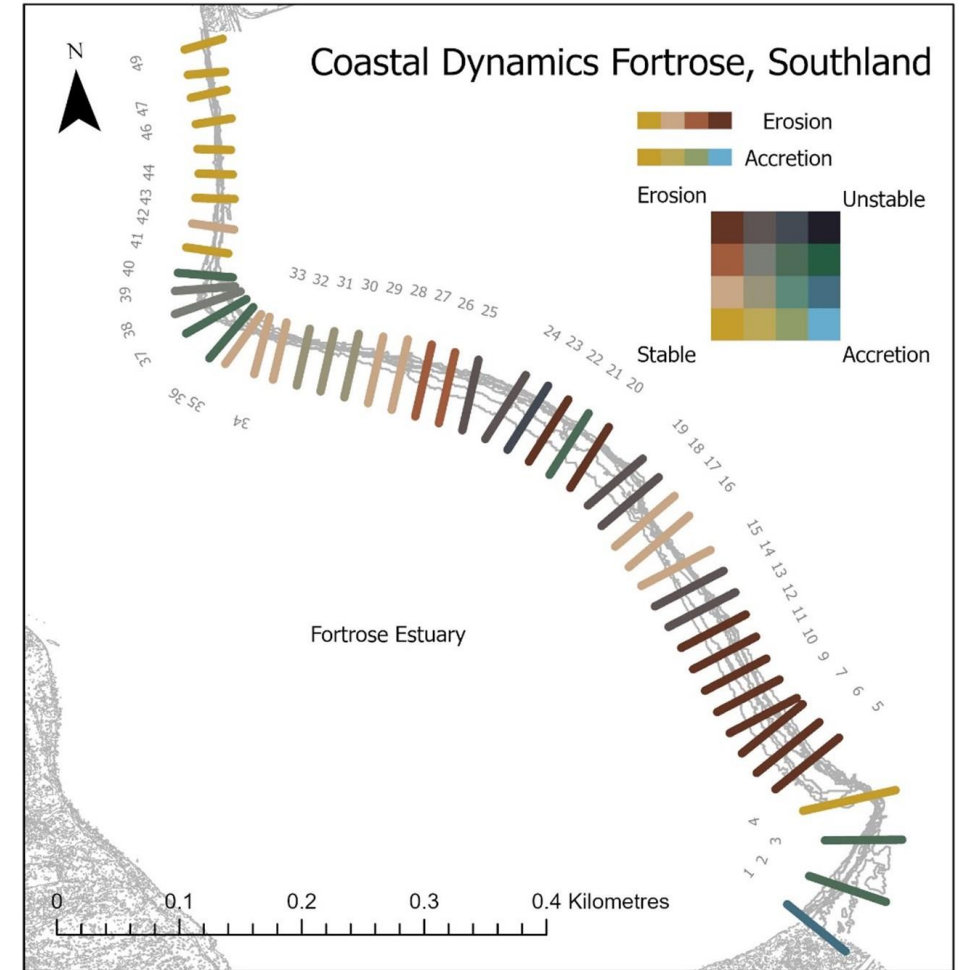
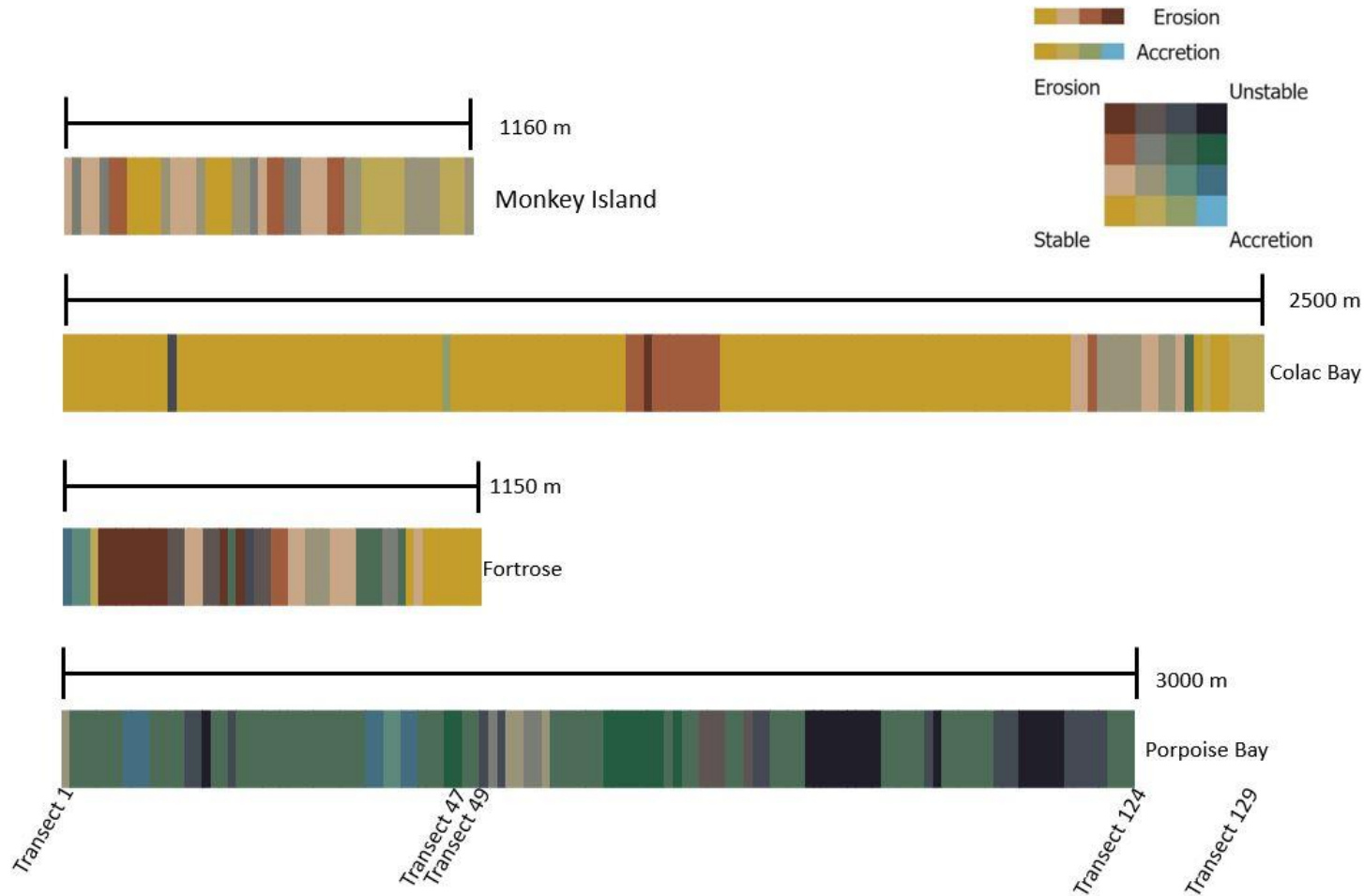




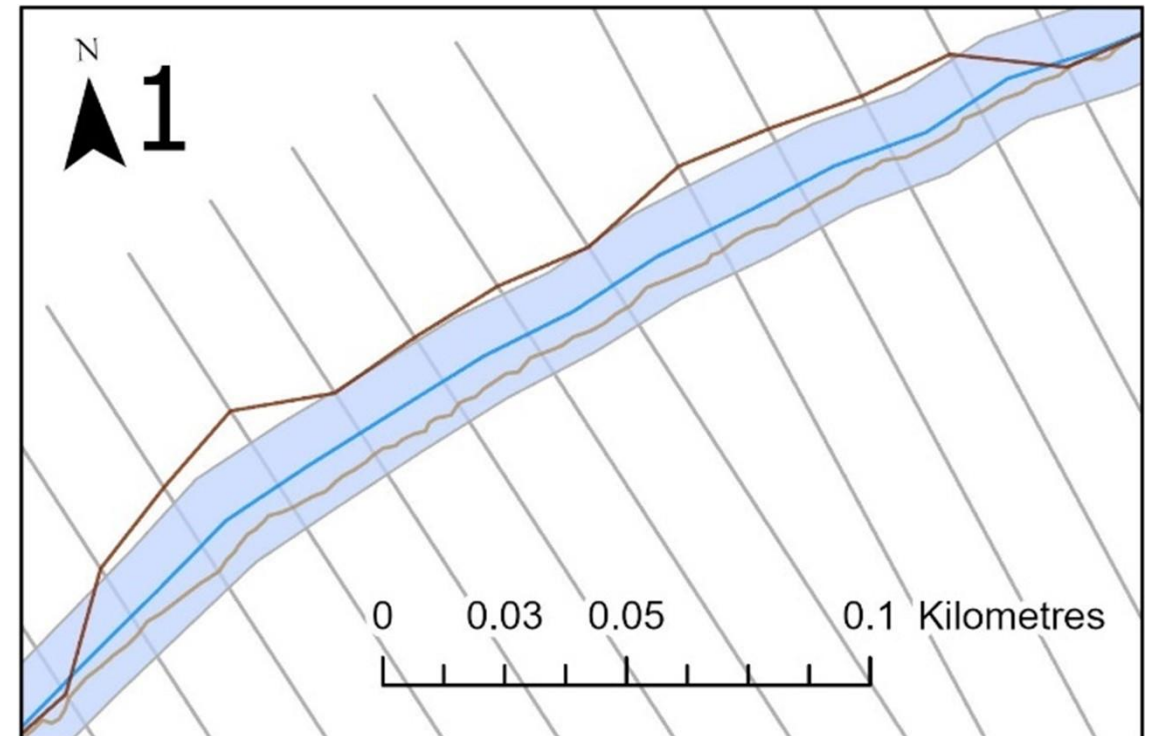
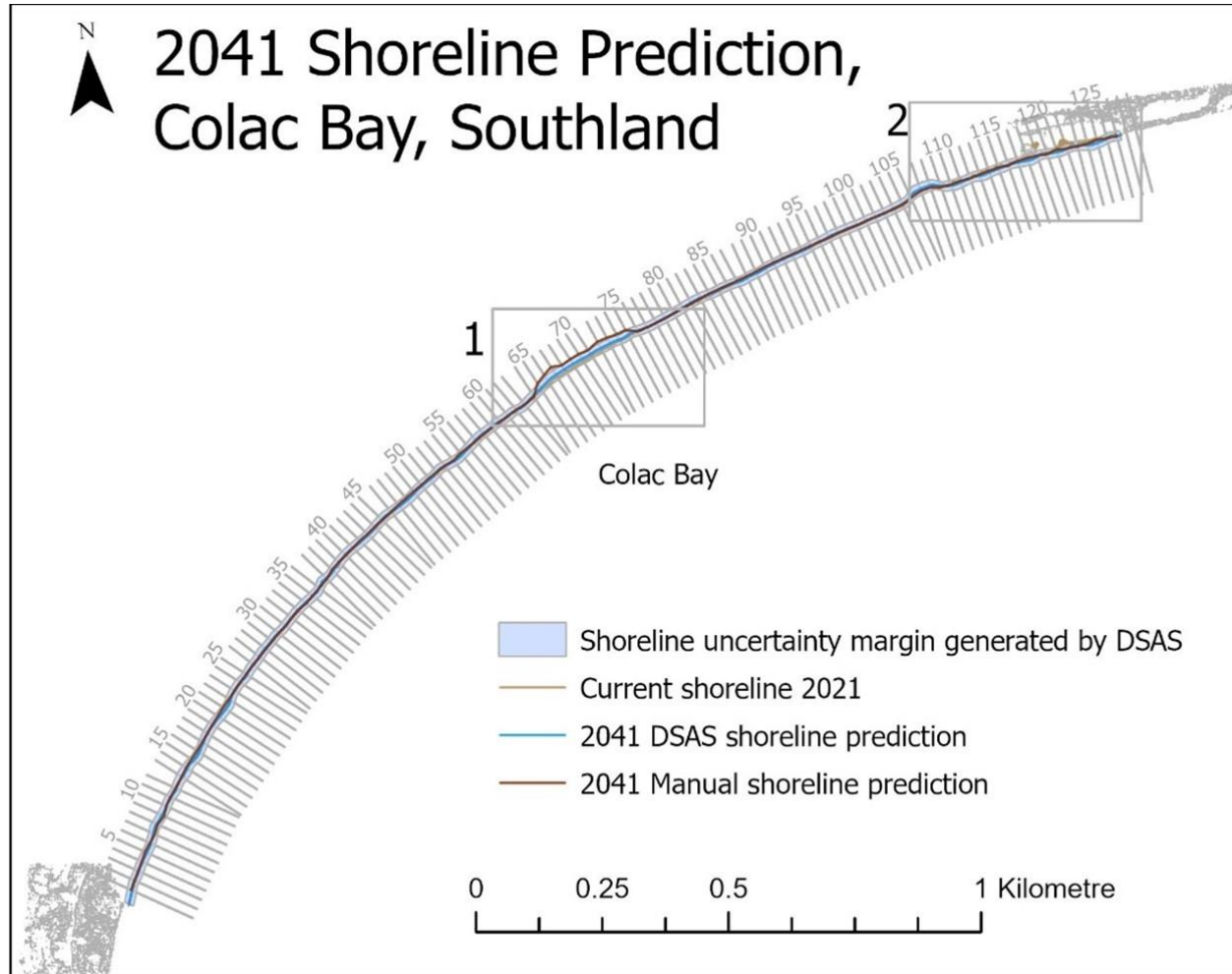
Historic Shorelines



Coastal Dynamics

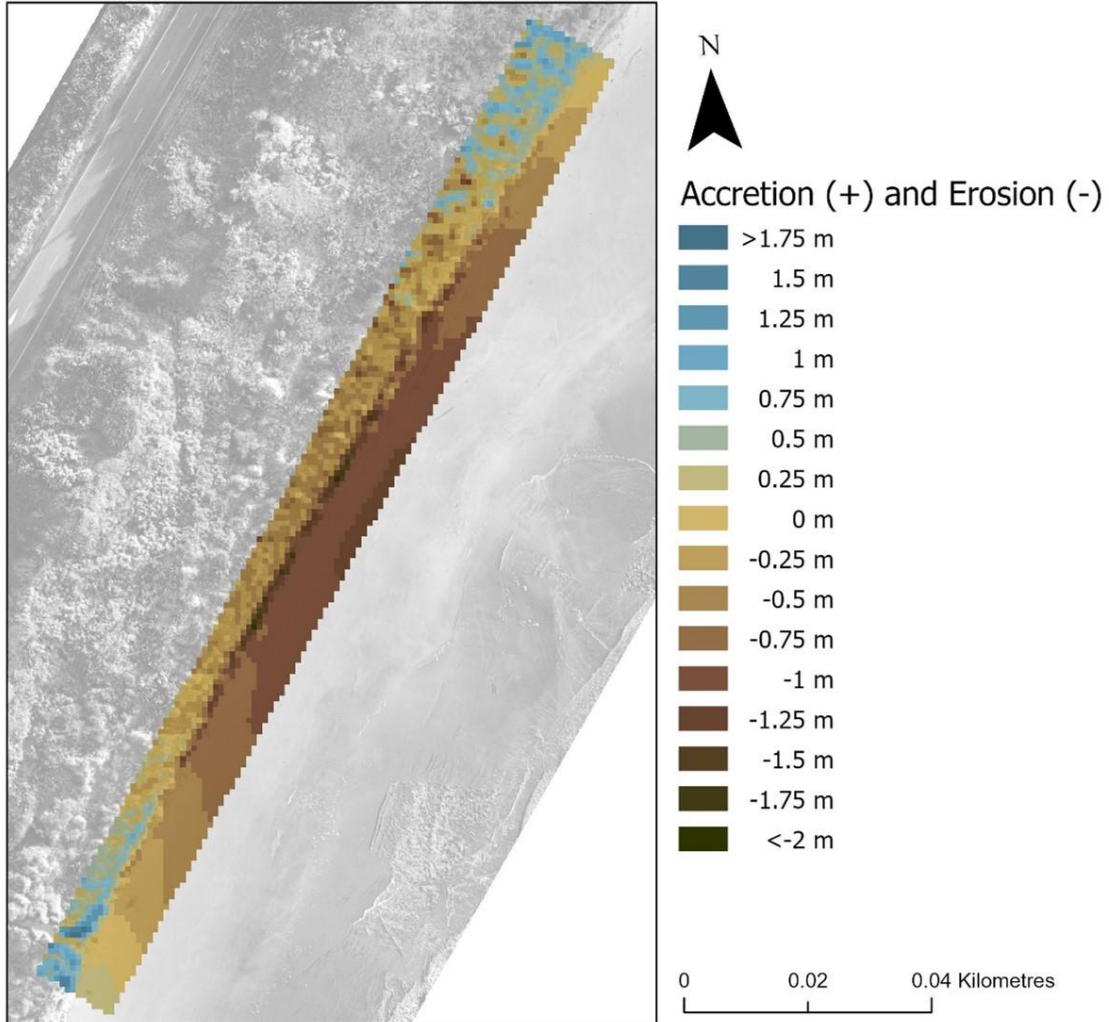


Predictions

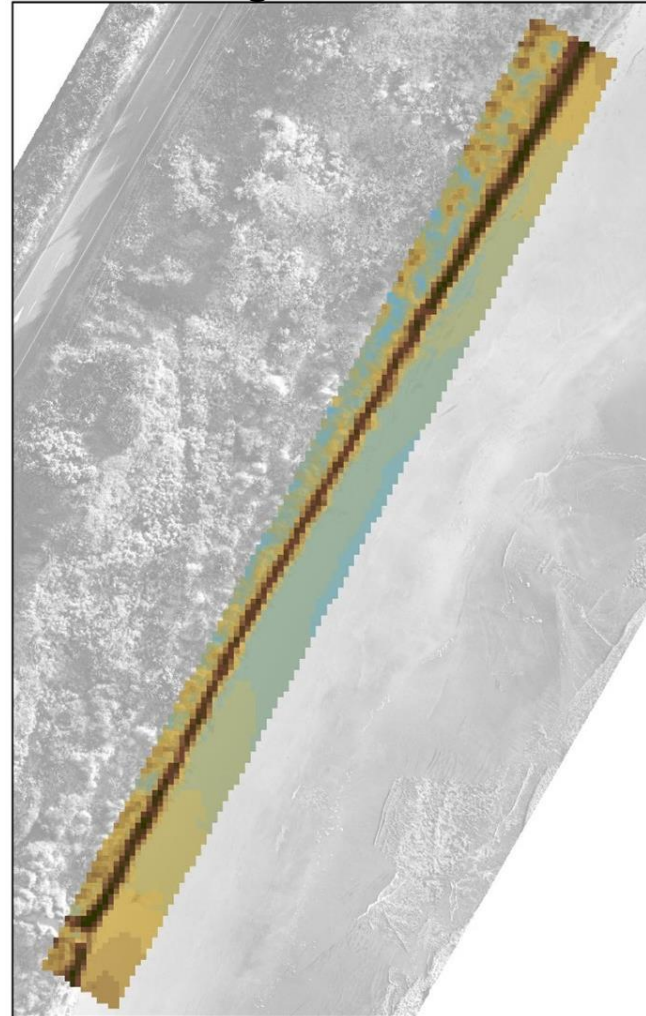


Volumetric Change

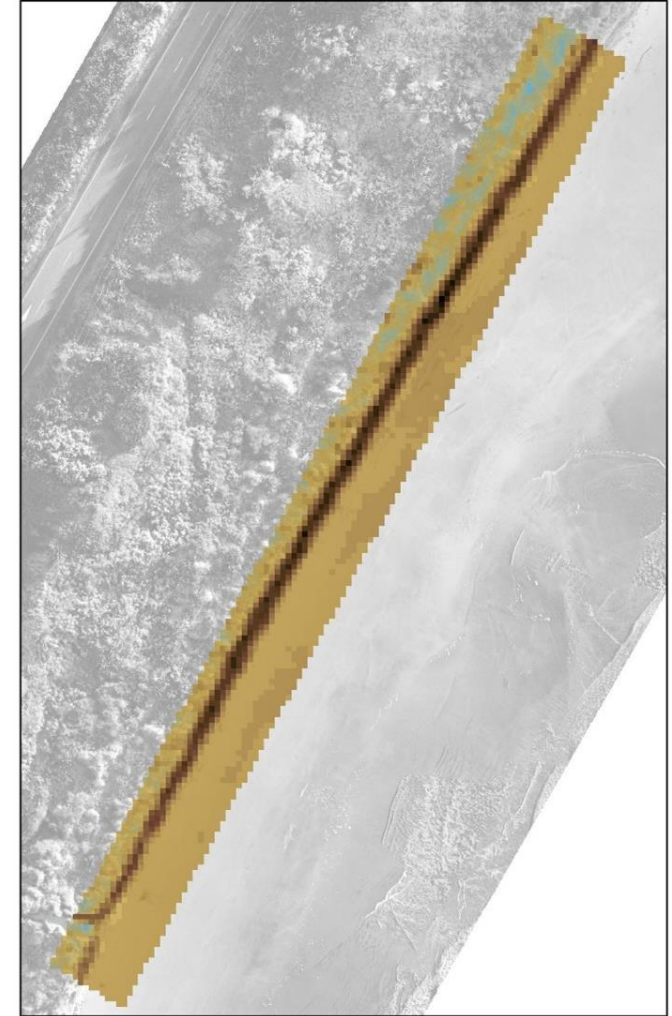
Relative height change between the February and August 3D UAV surveys



August to December



February to December

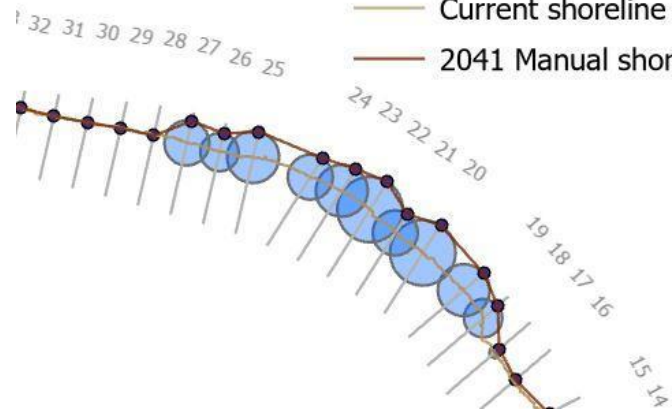


Buffer around 2021 shoreline intersect

• points 20 years estimate

— Current shoreline 2021

— 2041 Manual shoreline prediction



Set Default Parameters

Baseline Settings | Shoreline Settings | Metadata Settings

Baseline Parameters

Baseline Layer: Porpoisebaseline

Baseline ID Field: ID

Optional Parameters

Baseline Group Field: []

Baseline Search Distance Field: []

Baseline Placement

Midshore (or combination) Onshore Offshore

Baseline Orientation

Show Baseline Orientation

What is the location of land relative to baseline orientation?

Land is to the LEFT (L) Land is to the RIGHT (R)

Log File Output

Regular Extended None

Set Default Parameters

Baseline Settings | Shoreline Settings | Metadata Settings

Shoreline Parameters

Shoreline Layer: Porpoise11

Shoreline Date Field: DATE_

Shoreline Uncertainty Field: Uncertain

Default Data Uncertainty: 2 +/- meters

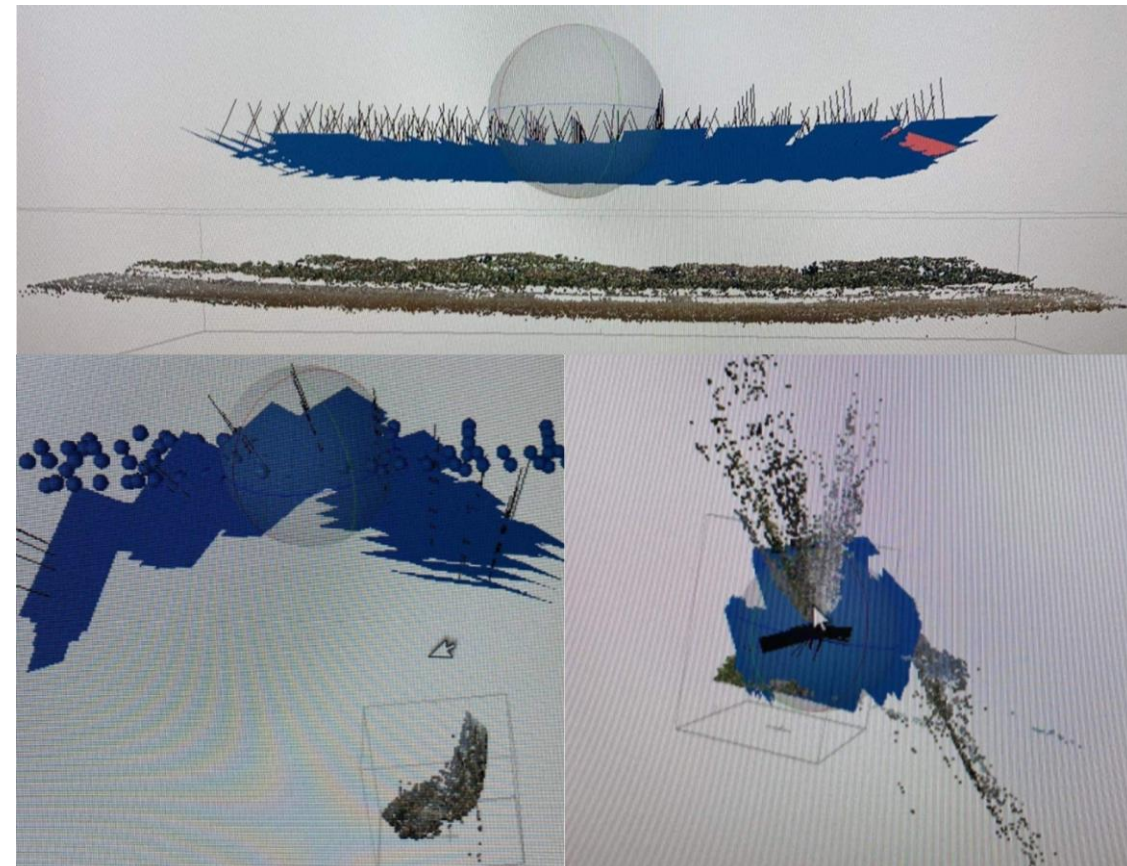
Intersection Parameters

Seaward Intersection

Landward Intersection

Log File Output

Regular Extended None



An aerial photograph of a coastline. On the left, there is a grassy dune area with patches of green and brown vegetation. A narrow strip of sand separates the dunes from the beach. The beach is a wide, light-colored expanse of sand. On the right, the ocean is a deep blue-green color, with white, foamy waves crashing onto the shore. The waves are breaking in a series of parallel lines, creating a rhythmic pattern of white foam against the darker water. The overall scene is a serene and natural coastal landscape.

Questions?