

Create a Lizard Friendly Garden

New Zealand has over 110 native lizards. Providing a safe habitat will help them thrive.

Lots of nooks and crannies give us places to hide, shelter from sun, and protect us from the cold.

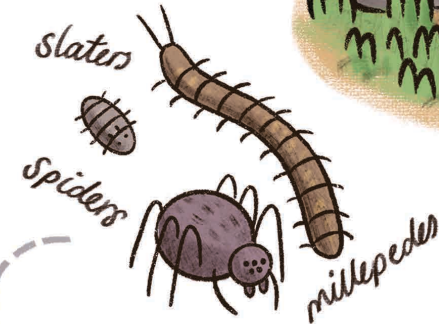
Please don't touch us. It is very stressful!

We like our gardens big, the bigger the better. 25m² or more is ideal. But we would still appreciate a small area with lots of places to hide.

Stack and pile logs, branches, and rocks. Lots of different sizes please! We like small cosy areas to feel safe.

Don't worry about gardening, we love a messy garden!

Choose a warm, dry, sunny space for your lizard garden.



A dark, moist habitat attracts creepy crawlies, we love having them for dinner!

A hidden water bowl is great for a drink.



Plant small shrubs, grasses and ground cover with twisting branches.



Plants with berries or nectar feed us and attract more bugs to eat!

green gecko

common skink